

6/7/2017

CONTRACT: DA00351 WBS ELEMENT: 2017CPT.01.24.10941.1

STATE OF NORTH CAROLINA
DIVISION OF HIGHWAYS
WASHINGTON COUNTY

STATE	STATE PROJECT REFERENCE NO.	SHEET NO.	TOTAL SHEETS
N.C.	2017CPT.01.24.10941.1	1	
STATE PROJ. NO.	F.A. PROJ. NO.	DESCRIPTION	
2017CPT.01.24.10941.1		MAP 1	

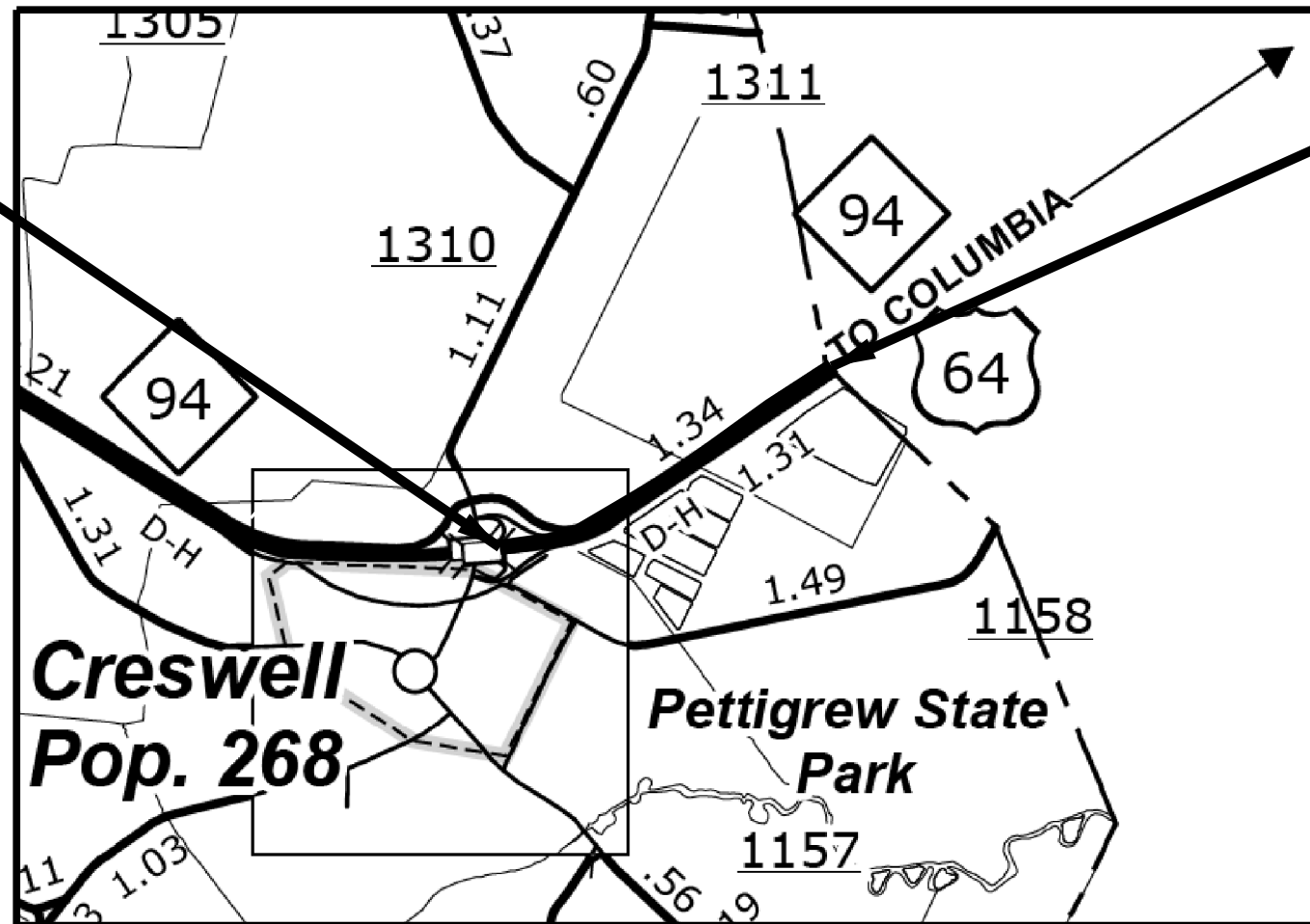
REVISED 6/8/2017

LOCATION: MAP 1 - US 64 EB - ALLIGOOD ROAD TO TYRRELL COUNTY LINE

TYPE OF WORK: MILLING, RESURFACING, OPEN GRADE FRICTION COURSE & LONG LIFE PAVEMENT MARKINGS

BEGIN MAP 1

END MAP 1



NOT TO SCALE

PROJECT LENGTH

LENGTH OF MAP 1 = 1.31 MI.

Prepared in the Office of:
DIVISION OF HIGHWAYS
113 Airport Dr., Edenton NC, 27932

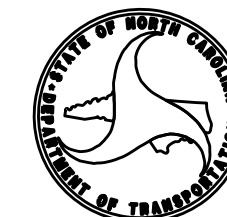
2012 STANDARD SPECIFICATIONS

LETTING DATE:

W.B. HOBBS, P.E.
DIVISION PROJECT MANAGER

C.E. SLACHTA
DIVISION PROPOSALS ENGINEER

DIVISION OF HIGHWAYS
STATE OF NORTH CAROLINA



05/20/15

CONTRACT: DA00351 WBS ELEMENT: 2017CPT.01.24.10941.1

STATE OF NORTH CAROLINA
DIVISION OF HIGHWAYS

WASHINGTON COUNTY

STATE	STATE PROJECT REFERENCE NO.	SHEET NO.	TOTAL SHEETS
N.C.	2017CPT.01.24.10941.1	2	
STATE PROJ. NO.	F.A. PROJ. NO.	DESCRIPTION	
2017CPT.01.24.10941.1		MAP 2	



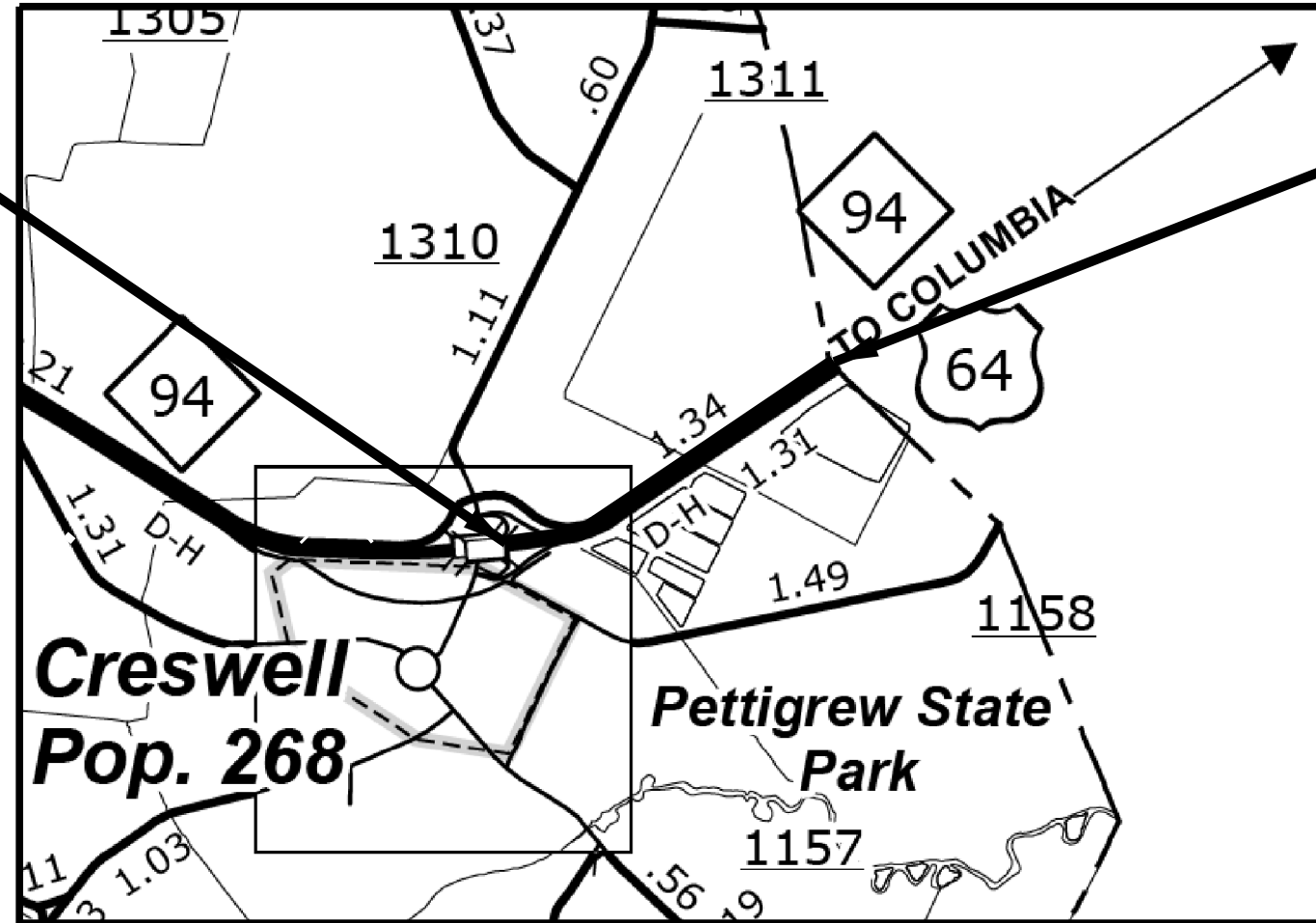
LOCATION: MAP 2 - US 64 WB - TYRRELL COUNTY LINE TO ALLIGOOD ROAD

REVISED 6/8/2017

TYPE OF WORK: MILLING, RESURFACING, OPEN GRADE FRICTION COURSE & LONG LIFE PAVEMENT MARKINGS

END MAP 2

BEGIN MAP 2



NOT TO SCALE

PROJECT LENGTH

LENGTH OF MAP 2 = 1.31 MI.

Prepared In the Office of
DIVISION OF HIGHWAYS
113 Airport Dr., Edenton NC, 27932

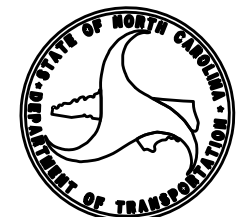
2012 STANDARD SPECIFICATIONS

LETTING DATE:

W.B. HOBBS, P.E.
DIVISION PROJECT MANAGER

C.E. SLACHTA
DIVISION PROPOSALS ENGINEER

DIVISION OF HIGHWAYS
STATE OF NORTH CAROLINA



05/08/13

CONTRACT: DA00351 WBS ELEMENT: 2017CPT.01.24.10891.1

STATE OF NORTH CAROLINA
DIVISION OF HIGHWAYS
TYRRELL COUNTY

STATE	STATE PROJECT REFERENCE NO.	SHEET NO.	TOTAL SHEETS
N.C.	2017CPT.01.24.10891.1	3	
STATE FUNDING	F.A. FUNDING	DESCRIPTION	
2017CPT.01.24.10891.1		MAP 3	

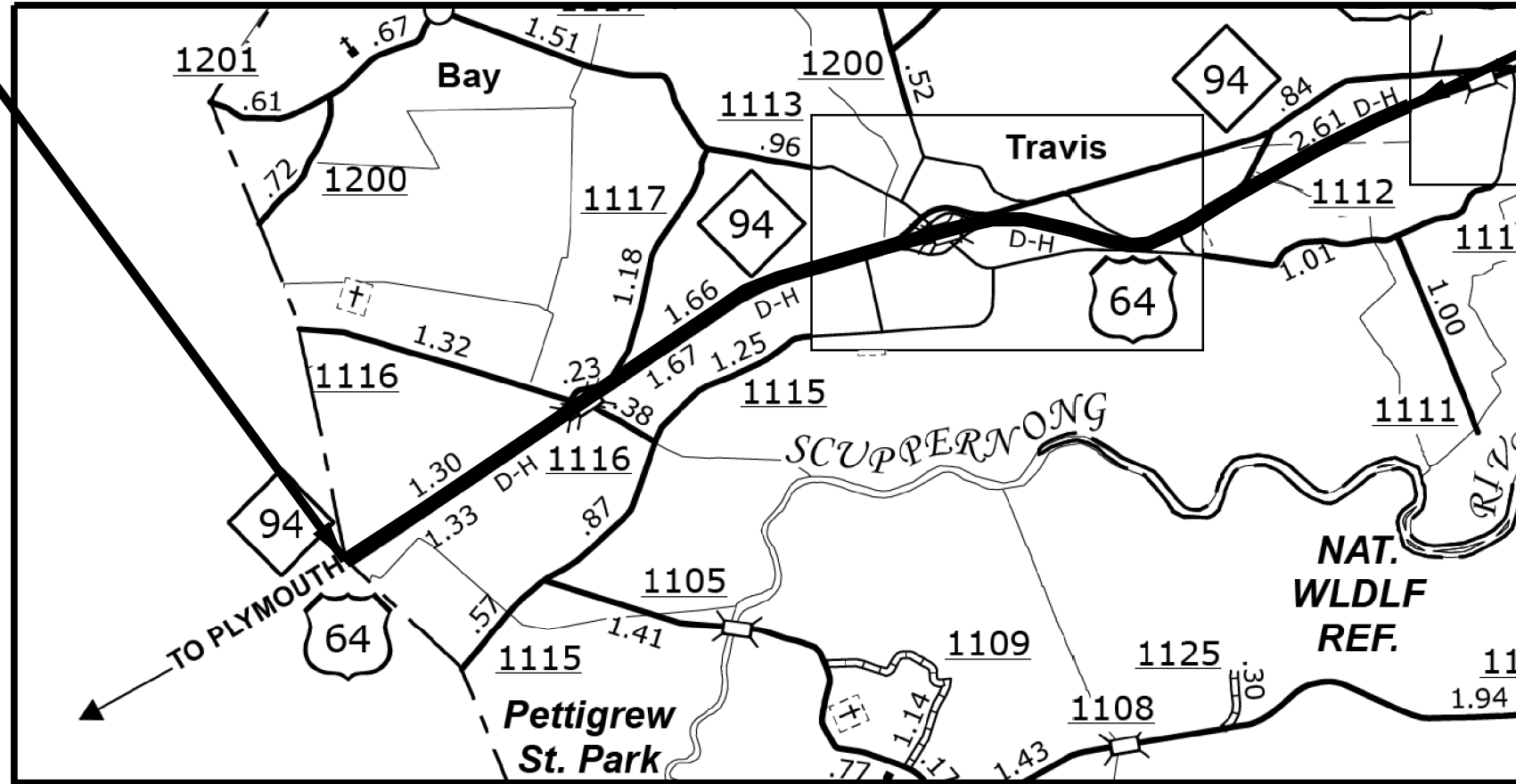


LOCATION: MAP 3 - US 64 EB - FROM WASHINGTON COUNTY LINE TO END FREEWAY

TYPE OF WORK: MILLING, RESURFACING, OPEN GRADE FRICTION COURSE & LONG LIFE PAVEMENT MARKINGS

BEGIN MAP 3

END MAP 3



NOT TO SCALE

PROJECT LENGTH

LENGTH OF MAP 3 = 5.77 MI.

Prepared in the Office of:
DIVISION OF HIGHWAYS
113 Airport Dr., Edenton NC, 27932

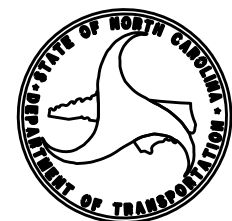
2012 STANDARD SPECIFICATIONS

LETTING DATE:

W.B. HOBBS, P.E.
DIVISION PROJECT MANAGER

C.E. SLACHTA
DIVISION PROPOSALS ENGINEER

DIVISION OF HIGHWAYS
STATE OF NORTH CAROLINA



95/80763

STATE OF NORTH CAROLINA
DIVISION OF HIGHWAYS

TYRRELL COUNTY

STATE	STATE PROJECT REFERENCE NO.	SHEET NO.	TOTAL SHEETS
N.C.	2017CPT.01.24.10891.1	4	
STATE FUND NO.	F.A.FUND NO.	DESCRIPTION	
2017CPT.01.24.10891.1		MAP 4	

CONTRACT: DA00351 WBS ELEMENT: 2017CPT.01.24.10891.1

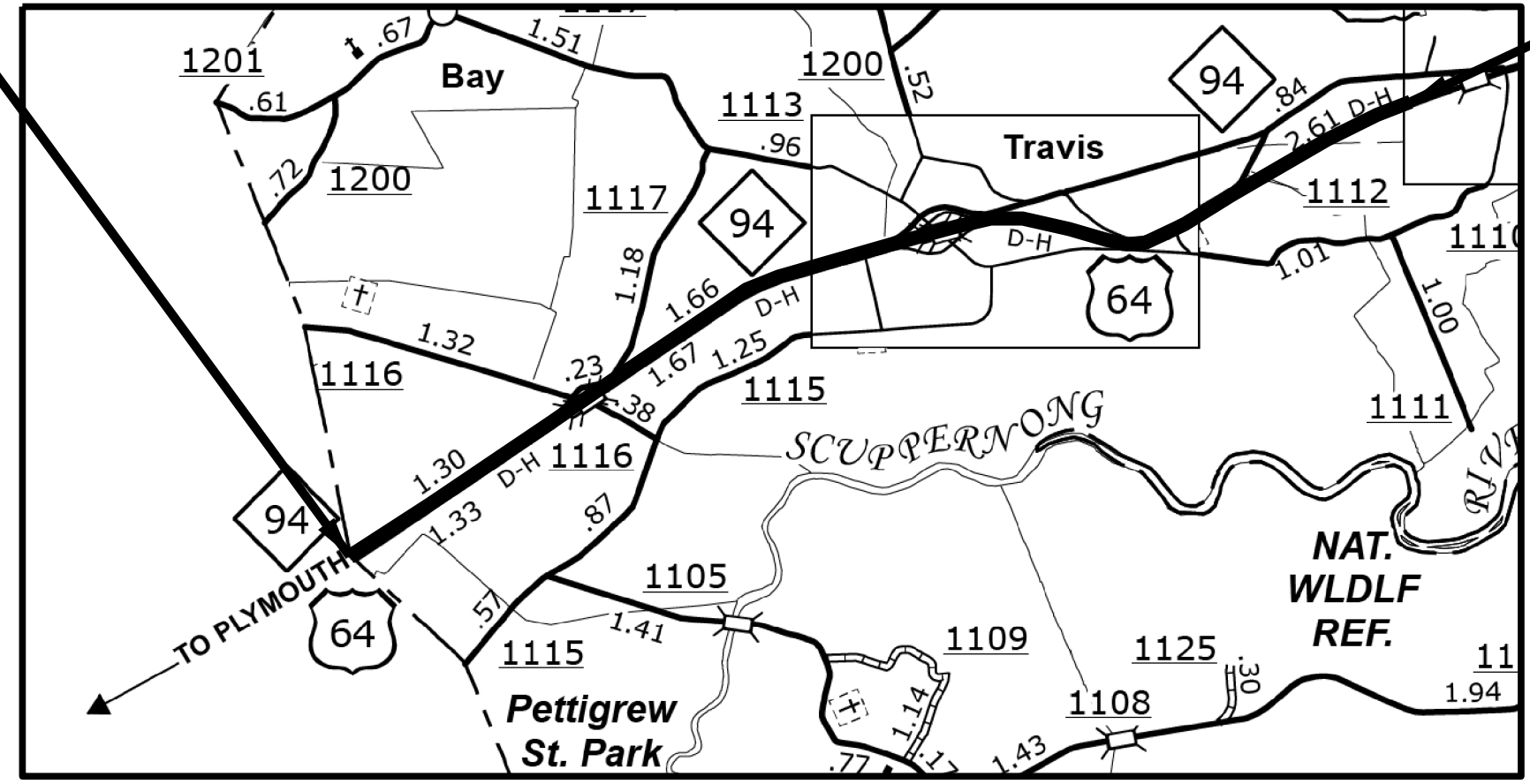


LOCATION: MAP 4 - US 64 WB - FROM END FREEWAY TO WASHINGTON COUNTY LINE

TYPE OF WORK: MILLING, RESURFACING, OPEN GRADE FRICTION COURSE & LONG LIFE PAVEMENT MARKINGS

END MAP 4

BEGIN MAP 4



NOT TO SCALE

PROJECT LENGTH

LENGTH OF MAP 4 = 5.77 MI.

Prepared in the Office of:
DIVISION OF HIGHWAYS

113 Airport Dr., Edenton NC, 27932

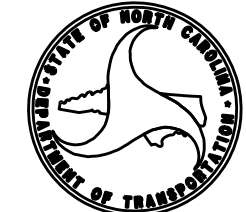
2012 STANDARD SPECIFICATIONS

LETTING DATE:

W.B. HOBBS, P.E.
DIVISION PROJECT MANAGER

C.E. SLACHTA
DIVISION PROPOSALS ENGINEER

DIVISION OF HIGHWAYS
STATE OF NORTH CAROLINA



09/08/09

STATE OF NORTH CAROLINA
DIVISION OF HIGHWAYS

TYRRELL COUNTY

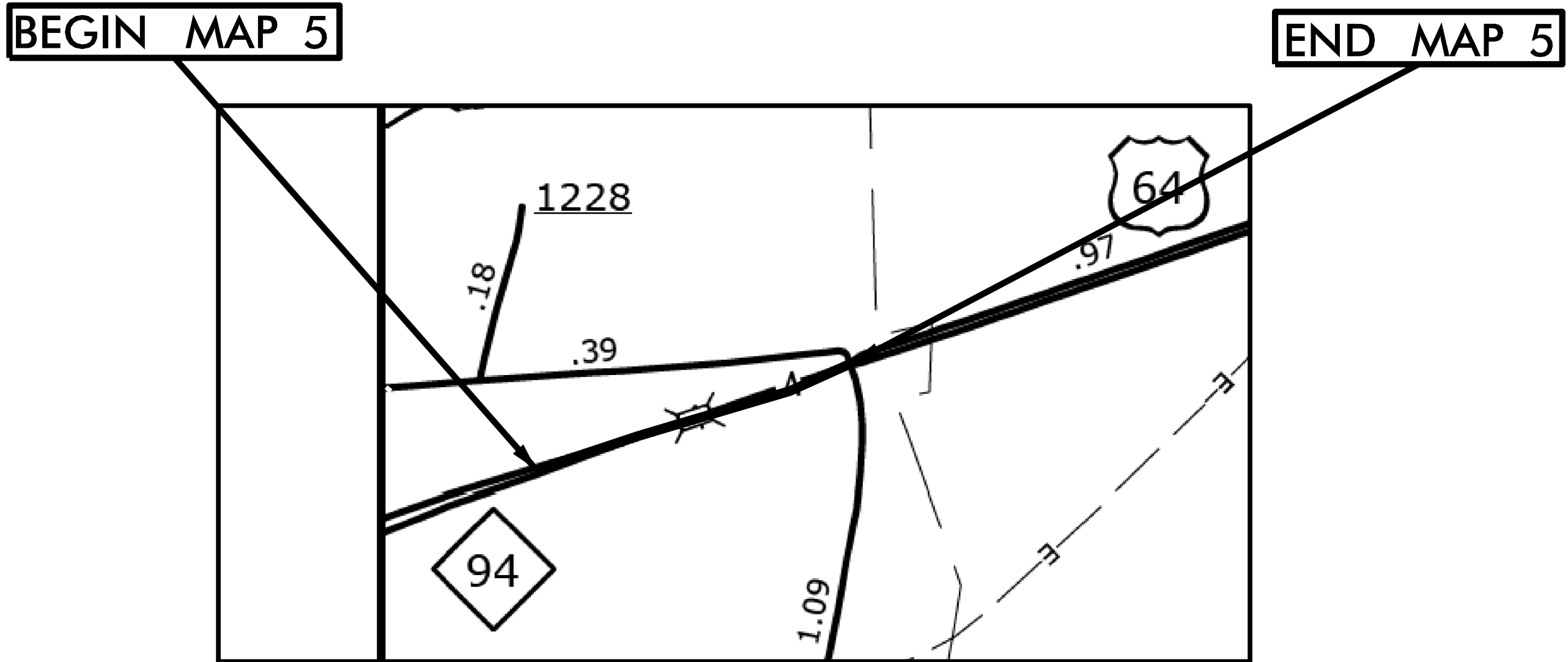
STATE	STATE PROJECT REFERENCE NO.	SHEET NO.	TOTAL SHEETS
N.C.	2017CPT.01.24.10891.1	5	
STATE FUNDING	F.A.FUNDING	DESCRIPTION	
2017CPT.01.24.10891.1		MAP 5	

CONTRACT: DA00351 WBS ELEMENT: 2017CPT.01.24.10891.1



LOCATION: MAP 5 - US 64 EB/WB - FROM END FREEWAY TO NC 94

TYPE OF WORK: MILLING, RESURFACING, & LONG LIFE PAVEMENT MARKINGS



NOT TO SCALE

PROJECT LENGTH

LENGTH OF MAP 5 = 0.33 MI.

Prepared in the Office of:
DIVISION OF HIGHWAYS
113 Airport Dr., Edenton NC, 27932

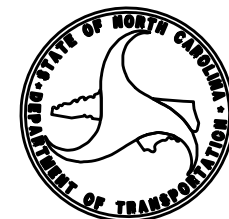
2012 STANDARD SPECIFICATIONS

LETTING DATE:

W.B. HOBBS, P.E.
DIVISION PROJECT MANAGER

C.E. SLACHTA
DIVISION PROPOSALS ENGINEER

DIVISION OF HIGHWAYS
STATE OF NORTH CAROLINA

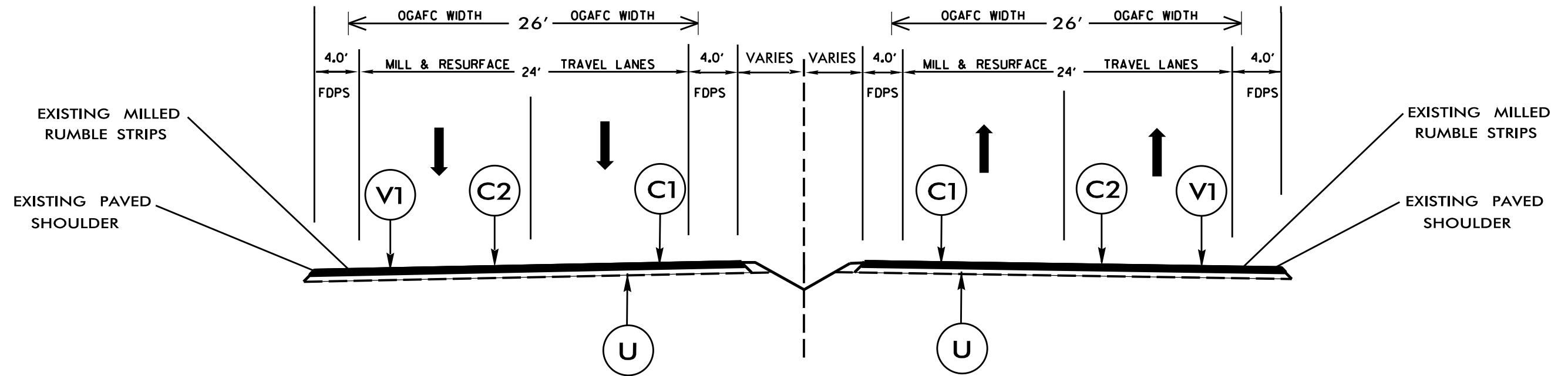
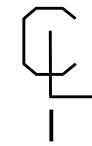


PAVEMENT SCHEDULE

C1	PROP. APPROX. 1.5" ASPHALT CONCRETE SURFACE COURSE, TYPE S9.5C, AT AN AVERAGE RATE OF 168 LBS. PER SQ. YD.
C2	PROP. APPROX. 0.75" OPEN GRADE ASPHALT FRICTION COURSE, TYPE FC-1 MODIFIED, AT AN AVERAGE RATE OF 90 LBS. PER SQ. YD.
V1	MILLING BITUMINOUS PAVEMENT. 1.5" IN DEPTH.
U	EXISTING PAVEMENT.

NOTES:

- *ALL PAVED S.R. ROADS OR RAMPS TO BE RESURFACED TO THE ENDS OF THE RADII, OR AS DIRECTED BY THE ENGINEER
- *INCIDENTAL MILLING INCLUDES ALL BUTT JOINTS AND RAMPS WHERE CURB AND GUTTER IS PRESENT
- *EDGES, PAVEMENT WIDENING, INTERSECTIONS, AND BRIDGE FLARES ARE INCLUDED IN THE SUMMARY OF QUANTITIES
- *EXISTING PAVED SHOULDERS NOT TO BE MILLED
- *1 1/2" MILLING AND 1.5" OF S9.5C TO BE APPLIED IN TRAVEL LANES ONLY
- *OPEN GRADE ASPHALT FRICTION COURSE TO BE APPLIED + 26' WIDE OR ONE FOOT BEYOND TRAVEL LANES ON EACH SIDE OF TRAVELWAY
- *EXISTING MILLED RUMBLE STRIPS NOT TO BE DISTURBED



TYPICAL SECTION NO. 1

USE WITH MAPS 1 - 4

NTS

SYSTEMS DESIGN & CONSTRUCTION
 1501 W. 10th Street, Suite 100
 Denver, CO 80202
 Phone: 303.733.8800
 Fax: 303.733.8801
 Email: info@systemsdesign.com

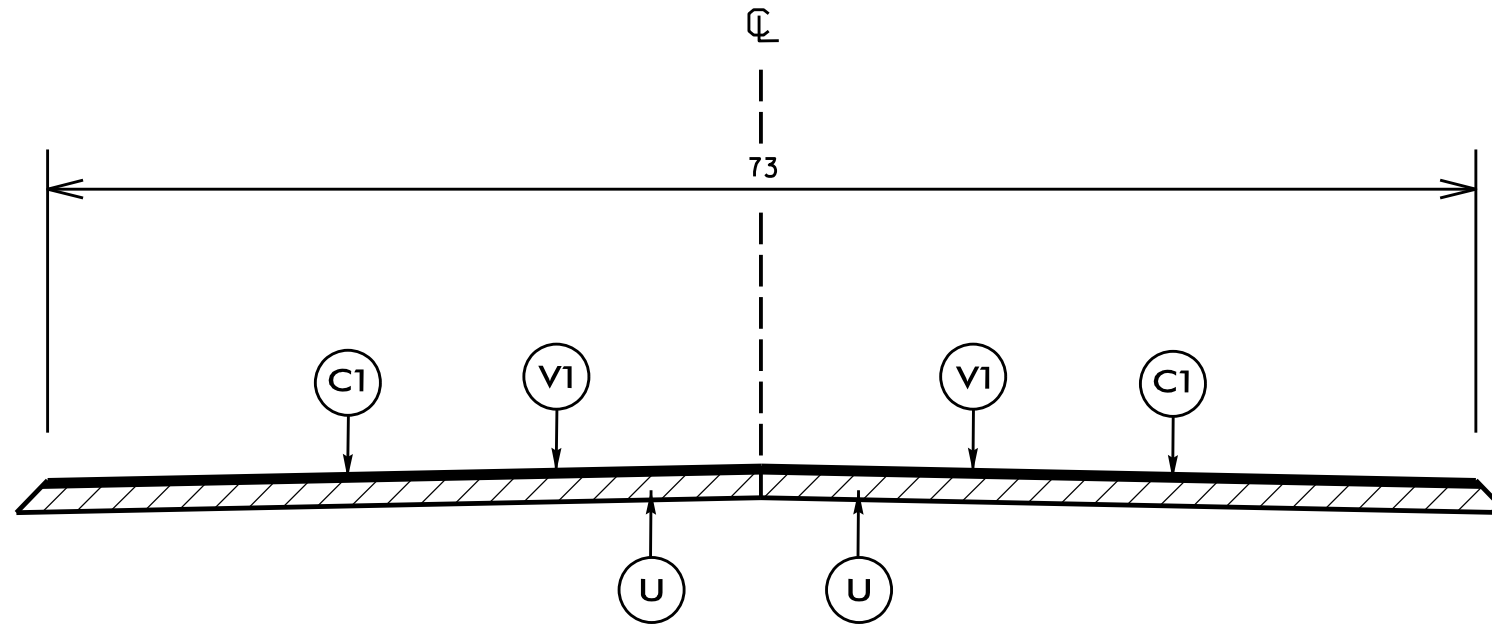
PAVEMENT SCHEDULE

PROJECT REFERENCE NO.	SHEET NO.
2017CPT.01.24.10891.1	7

C1	PROP. APPROX. 1.5" ASPHALT CONCRETE SURFACE COURSE, TYPE S9.5C, AT AN AVERAGE RATE OF 168 LBS. PER SQ. YD.
V1	MILLING BITUMINOUS PAVEMENT. 1.5" DEPTH.
U	EXISTING PAVEMENT.

RESURFACING NOTES:

*ALL PAVED S.R. ROADS TO BE RESURFACED TO THE ENDS OF THE RADII., OR AS DIRECTED BY THE ENGINEER.



TYPICAL SECTION NO. 2

USE WITH MAP 5

NTS

STANDARD SPECIFICATIONS FOR CONSTRUCTION OF PUBLIC WORKS

PROJECT NO.	SHEET NO.
2017CPT.01.24.10941.1, ETC.	8

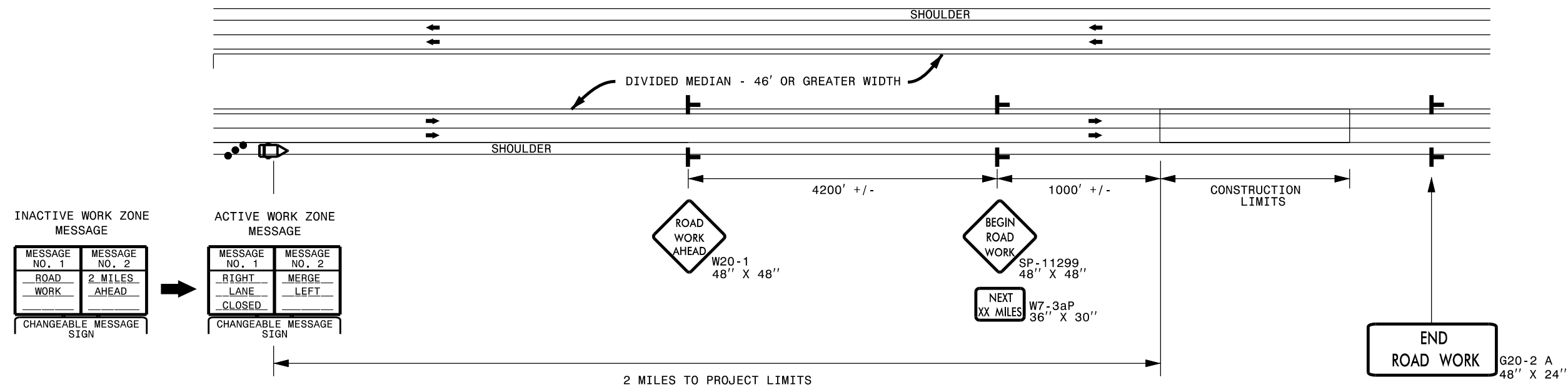
SUMMARY OF QUANTITIES

PROJECT NO	COUNTY	MAP NO	ROUTE	DESCRIPTION	TYP	LANES	LANE TYPE	FINAL SURFACE TESTING REQUIRED	WARM MIX ASPHALT REQUIRED	MATERIAL TRANSFER VEHICLE REQUIRED	LENGTH MI	WIDTH FT	MOBILIZATION LS	1½" MILLING SY	INCIDENTAL MILLING SY	SURFACE COURSE, S9.5C TONS	ASPHALT BINDER FOR PLANT MIX TONS	POLYMER MODIFIED ASPHALT BINDER FOR PLANT MIX TONS	OGAFC, TYPE FC-1 MOD TONS	WORK ZONE ADV/GEN WARN SIGN SF	TEMPORARY TRAFFIC CONTROL LS
2017CPT.01.24.10941.1	Washington	1	US 64 EB	ALLIGOOD ROAD TO TYRRELL COUNTY LINE	1	4	MD	NO	NO	YES	1.31	26	1	19,500	1,000	1,635	96	54	883	200	1
2017CPT.01.24.10941.1	Washington	2	US 64 WB	TYRRELL COUNTY LINE TO ALLIGOOD ROAD	1	4	MD	NO	NO	YES	1.31	26	*	19,500	1,000	1,635	96	54	883	200	*
2017CPT.01.24.10891.1	Tyrrell	3	US 64 EB	WASHINGTON COUNTY LINE TO END FREEWAY	1	2	MD	NO	NO	YES	5.77	26	*	85,000	200	7,203	425	237	3,891	200	*
2017CPT.01.24.10891.1	Tyrrell	4	US 64 WB	BEGIN FREEWAY TO WASHINGTON COUNTY LINE	1	2	MD	NO	NO	YES	5.77	26	*	85,000	200	7,203	425	237	3,891	200	*
2017CPT.01.24.10891.1	Tyrrell	5	US 64 EB/WB	FROM END FREEWAY TO NC 94	2	5	MU	NO	NO	NO	0.33	73	*	15,000		1,249	74			200	*
GRAND TOTAL											14.49		1	224,000	2,400	18,925	1,116	582	9,548	1000	1

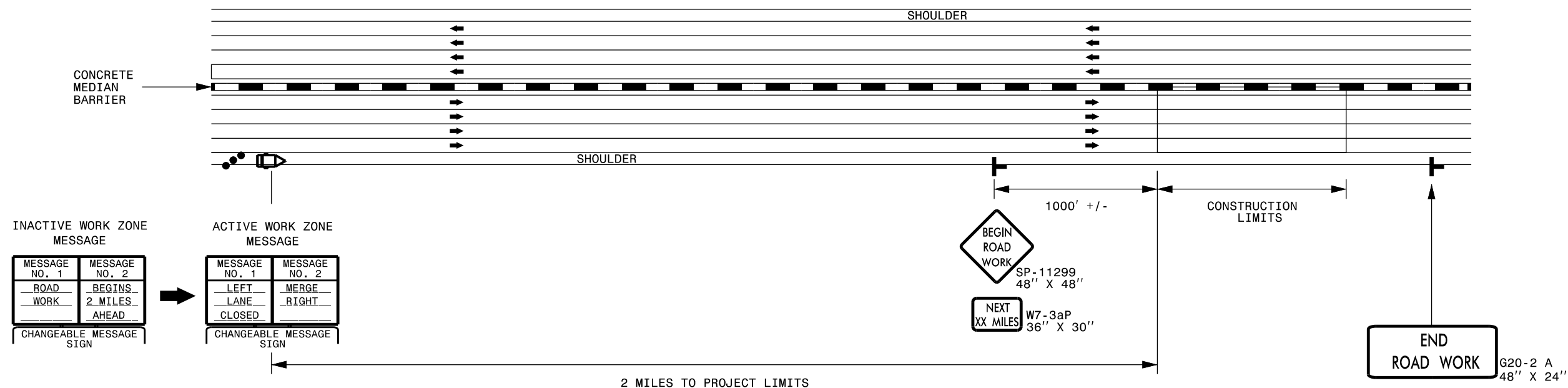
THERMOPLASTIC AND PAINT QUANTITIES

PROJECT NO	COUNTY	MAP NO	ROUTE	DESCRIPTION	TYP	LANES	LANE TYPE	LENGTH	WIDTH	4" X 90 M WHITE THERMO LF	6" X 90 M WHITE THERMO LF	6" X 90 M YELLOW THERMO LF	6" X 120 M WHITE THERMO LF	6" X 120 M YELLOW THERMO LF	8" X 90 M WHITE THERMO LF	12" X 90 M WHITE THERMO LF	12" X 120 M YELLOW THERMO LF	THERMO LT ARROW 90 M EA	THERMO RT ARROW 90 M EA	THERMO STR & RT ARROW 90 M EA	4" WHITE PAINT LF	4" YELLOW PAINT LF	SNOW PLOWABLE MARKERS EA
2017CPT.01.24.10941.1	Washington	1	US 64 EB	ALLIGOOD ROAD TO TYRRELL COUNTY LINE	1	4	MD	1.31	26		8,000	8,000	1,000			650		3			15,500	8,000	130
2017CPT.01.24.10941.1	Washington	2	US 64 WB	TYRRELL COUNTY LINE TO ALLIGOOD ROAD	1	4	MD	1.31	26		8,000	8,000	1,000			650		3			15,500	8,000	130
2017CPT.01.24.10891.1	Tyrrell	3	US 64 EB	WASHINGTON COUNTY LINE TO END FREEWAY	1	2	MD	5.77	26		32,000	32,000	1,250			1,500		3			50,000	35,000	475
2017CPT.01.24.10891.1	Tyrrell	4	US 64 WB	BEGIN FREEWAY TO WASHINGTON COUNTY LINE	1	2	MD	5.77	26		32,000	32,000	1,250			1,500		3			50,000	35,000	475
2017CPT.01.24.10891.1	Tyrrell	5	US 64 EB/WB	FROM END FREEWAY TO NC 94	2	5	MU	0.33	73	5,300				7,000	500		500	2	2	2	5,300	7,000	125
GRAND TOTAL								14.49		5,300	80,000	80,000	4,500	7,000	500	4,300	500	14	2	2	136,300	93,000	1,335
										160,000		11,500				18		229,300					

DIVIDED MEDIANS WITH WIDTHS 46' OR GREATER



DIVIDED MEDIANS WITH WIDTHS LESS THAN 46' OR WITH PERMANENT MEDIAN BARRIER



NOTES:

- 1) LATERAL CLEARANCE AT ALL SIGN LOCATIONS SHALL BE 6' AS MEASURED FROM THE EDGE OF PAVEMENT.
- 2) MOUNT SIGNS THAT ARE LARGER THAN 10 SQUARE FEET IN AREA ON TWO OR MORE WOOD OR U-CHANNEL SUPPORTS. PERFORATED SQUARE TUBING SUPPORT SYSTEMS MAY SUPPORT LARGER AREAS ON A SINGLE SUPPORT. FOLLOW MANUFACTURER'S RECOMMENDATIONS. THESE SYSTEMS SHALL BE NCHRP 350 COMPLIANT AND NCDOT APPROVED.
- 3) FOR MEDIAN WIDTHS LESS THAN 46' (MEASURED EDGELINE TO EDGELINE) USE THE BOTTOM DRAWING.
- 4) IF STATIONARY GENERAL WARNING SIGNS ARE USED, THEY WILL BE PAID FOR PER SECTION 104 OF THE NCDOT STANDARD SPECIFICATIONS AS EXTRA WORK.
- 5) INSTALL "ROAD WORK AHEAD" (W20-1) ALONG ENTRANCE RAMP 500' PRIOR TO RAMP TERMINAL, AND "END ROAD WORK" (G20-2a) AT THE END OF EXIT RAMP WITHIN THE WORK ZONE.
- 6) IF MILLED AREAS ARE NOT PAVED BACK BY THE END OF THE WORK DAY, PORTABLE SIGNS SHALL BE USED TO WARN DRIVERS OF THE PRESENT CONDITIONS. THESE ARE TO INCLUDE, BUT NOT LIMITED TO "ROUGH ROAD" W8-8, "UNEVEN LANES" W8-11, "GROOVED PAVEMENT" W8-15 w/MOTORCYCLE PLAQUE MOUNTED BELOW. THESE ARE TO BE DOUBLE INDICATED ON MULTI-LANE ROADWAYS WITH SPEED LIMITS 45 MPH AND GREATER AND WITH DIVIDED MEDIANS OF 46' OR GREATER. THESE PORTABLE SIGNS ARE INCIDENTAL TO THE OTHER ITEMS OF WORK INCLUDED IN THE TEMPORARY TRAFFIC CONTROL (LUMP SUM) PAY ITEM.

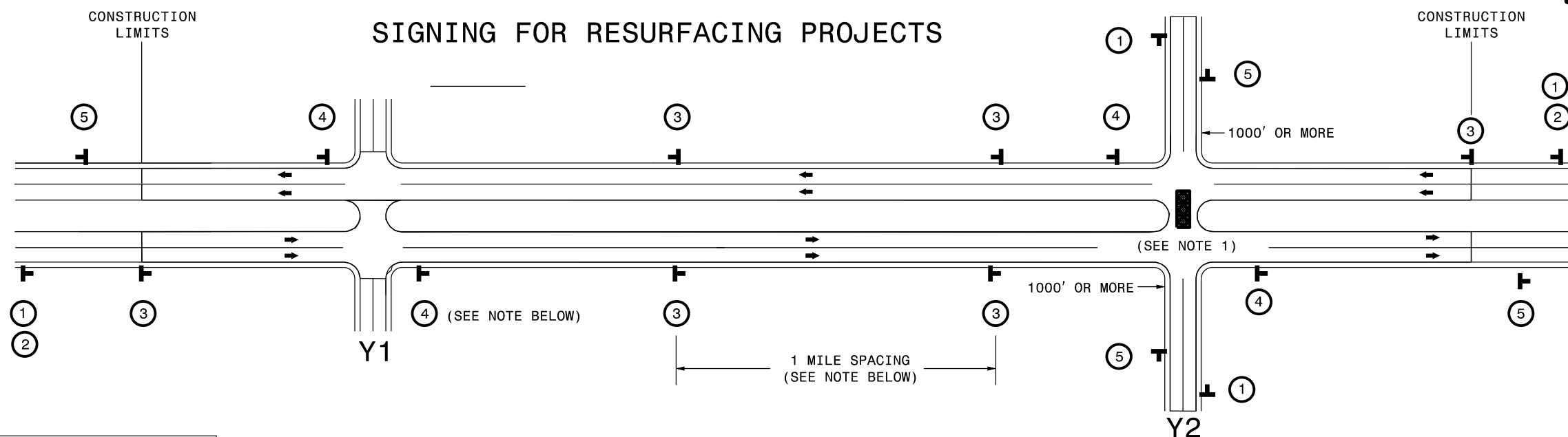
LEGEND

- CHANGEABLE MESSAGE SIGN (CMS)
- STATIONARY SIGN
- DIRECTION OF TRAFFIC FLOW
- TRAFFIC DRUM



RESURFACING ADVANCE
WARNING SIGNS FOR
HIGH SPEED FACILITIES
≥ 60 MPH

SYSTEMS



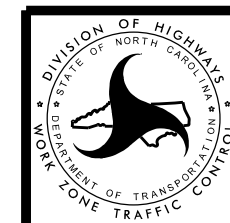
LEGEND
 T STATIONARY SIGN
 ← DIRECTION OF TRAFFIC FLOW

MAINLINE (-L-) SIGNING

-Y- LINE SIGNING

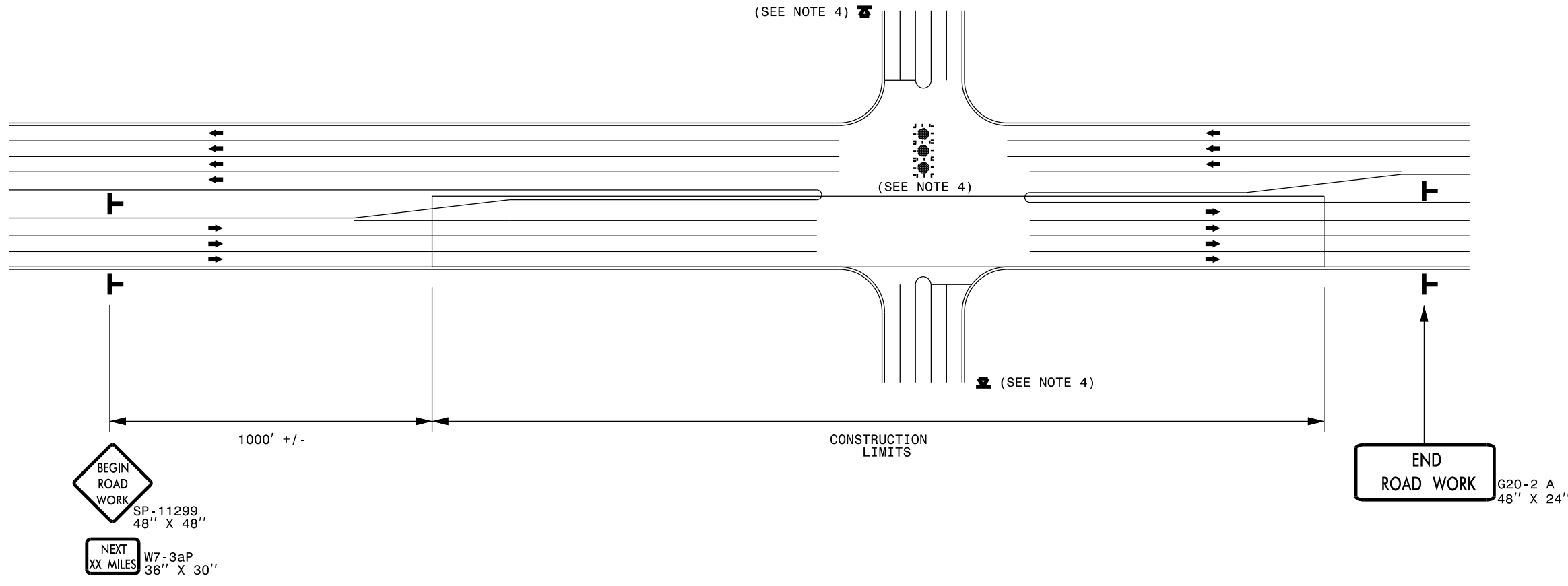
SIGNING NOTES AND PLACEMENT PER DIRECTION	① ②	 W20-1 48" X 48" W7-3aP 24" X 18"	PLACE 1000' PRIOR TO BEGINNING OF CONSTRUCTION LIMITS. ONLY USED ON -Y- LINES IF RESURFACING LIMITS EXTEND 1000' ALONG -Y- LINE. #2 SIGN ONLY USED WHEN RESURFACING LIMITS ARE 2 OR MORE MILES IN LENGTH. ROUND UP TO NEXT WHOLE NUMBER. (NO FRACTIONAL OR DECIMAL NUMBERS)	<p>NO REQUIRED STATIONARY SIGNING FOR THE FOLLOWING -Y- LINE CONDITIONS:</p> <ol style="list-style-type: none"> 1) LESS THAN 1000' OF RESURFACING ALONG -Y- LINE 2) SUBDIVISION ROADS 3) DEAD END ROADS <p>WHEN PAVING/CONSTRUCTION ACTIVITIES PROCEED ACROSS AN UNSIGNED -Y- LINE, ADVANCE WARNING PORTABLE SIGNS SHALL BE USED ALONG THE -Y- LINE AS SHOWN BELOW. REMOVE UPON COMPLETION OF WORK.</p> <div style="display: flex; justify-content: space-around;"> <div style="text-align: center;"> W20-1 48" X 48" </div> <div style="text-align: center;"> W20-7 A 48" X 48" </div> </div> <p>PLACED 500' IN ADVANCE OF FLAGGER. PLACED 250' IN ADVANCE OF FLAGGER.</p> <p>NOTES:</p> <ol style="list-style-type: none"> 1) MAY USE LAW ENFORCEMENT TO CONTROL TRAFFIC AT SIGNALIZED INTERSECTIONS AS DIRECTED BY THE ENGINEER. PROVIDE PORTABLE "ROAD WORK AHEAD" (W20-1) SIGNS 500' IN ADVANCE ALONG BOTH APPROACHES FROM THE SIDE STREETS WHEN PAVING PROCEEDS THROUGH THE INTERSECTION.
	③	 SP 13107 48" X 48"	PLACE INITIALLY AT THE CONSTRUCTION LIMITS AND SPACED 1 MILE APART THEREAFTER. IF NO -Y- LINES EXIST, PLACE 2ND SET 1/2 MILE FROM THE CONSTRUCTION LIMITS AND THEN SPACE 1 MILE THEREAFTER.	
	④	 SP 13106 48" X 48"	THESE ARE FOR -Y- LINES THAT ARE "THROUGH" ROADWAYS. DEAD END AND SUBDIVISION ROADS ARE NOT "THROUGH" ROADWAYS. INSTALL 500' +/- FROM EACH -Y- LINE APPROACH AS SHOWN ABOVE. FOR MULTIPLE -Y- LINES THAT ARE SEPARATED BY 0.25 MILES OR LESS, TREAT AS A SINGLE UNIT AND INSTALL WITHIN 500' OF EACH APPROACH. A MAXIMUM OF 2 SIGN SETS PER MILE. DO NOT INSTALL WHEN -Y- LINES ARE WITHIN 0.5 MILES FROM "END ROAD WORK" SIGN.	
	⑤	 G20-2 A 48" X 24"	PLACE 500' FOLLOWING THE END OF CONSTRUCTION LIMITS.	

\$\$\$\$\$SYTIME\$\$\$\$\$
 \$\$\$DDGN\$\$\$\$\$
 \$\$\$USERNAM\$\$\$\$\$



**RESURFACING
 ADVANCE WARNING SIGNS
 FOR RURAL AND SUBURBAN
 MULTI-LANE ROADWAYS
 W/ SHOULDER SECTIONS**

URBAN / SUBURBAN WORKZONES



NOTES:

- 1) 48" x 48" SIZED SIGNS (SP- 11299) MAY BE REDUCED TO 36" X 36" ON ROADWAYS WITH SPEED LIMITS OF 40 MPH OR LESS.
- 2) MOUNT SIGNS THAT ARE LARGER THAN 10 SQUARE FEET IN AREA ON TWO OR MORE WOOD OR U-CHANNEL SUPPORTS. PERFORATED SQUARE TUBING SUPPORT SYSTEMS MAY SUPPORT LARGER AREAS ON A SINGLE SUPPORT. FOLLOW MANUFACTURER'S RECOMMENDATIONS. THESE SYSTEMS SHALL BE NCHRP 350 COMPLIANT AND NCDOT APPROVED.
- 3) ADVANCE WARNING SIGNS NOT REQUIRED ON NON-SIGNALIZED SIDE STREETS.
- 4) MAY USE LAW ENFORCEMENT TO CONTROL TRAFFIC AT SIGNALIZED INTERSECTIONS AS DIRECTED BY THE ENGINEER. PROVIDE PORTABLE "ROAD WORK AHEAD" (W20-1) SIGNS 500' IN ADVANCE ALONG BOTH APPROACHES FROM THE SIDE STREETS WHEN PAVING PROCEEDS THROUGH THE INTERSECTION.
- 5) LATERAL CLEARANCE AT ALL SIGN LOCATIONS SHALL BE 2' AS MEASURED FROM THE EDGE OF PAVEMENT OR THE FACE OF THE CURB. WHEN UNABLE TO OBTAIN THE LATERAL CLEARANCE WITHIN THE MEDIAN AREA USE SHOULDER MOUNTS ONLY.
- 6) SIGN MOUNT LOCATIONS SHALL NOT BLOCK SIDEWALKS OR DRIVEWAYS.
- 7) IF STATIONARY GENERAL WARNING SIGNS ARE USED, THEY WILL BE PAID FOR PER SECTION 104 OF THE NCDOT STANDARD SPECIFICATIONS AS EXTRA WORK.
- 8) IF MILLED AREAS ARE NOT PAVED BACK BY THE END OF THE WORK DAY, PORTABLE SIGNS SHALL BE USED TO WARN DRIVERS OF THE PRESENT CONDITIONS. THESE ARE TO INCLUDE, BUT NOT LIMITED TO "ROUGH ROAD" W8-8, "UNEVEN LANES" W8-11, "GROOVED PAVEMENT" W8-15 w/MOTORCYCLE PLAQUE MOUNTED BELOW. THESE ARE TO BE DOUBLE INDICATED ON MULTI-LANE ROADWAYS WITH SPEED LIMITS 45 MPH AND GREATER WHERE LATERAL CLEARANCE CAN BE OBTAINED WITHIN THE MEDIAN AREAS.THESE PORTABLE SIGNS ARE INCIDENTAL TO THE OTHER ITEMS OF WORK INCLUDED IN THE TEMPORARY TRAFFIC CONTROL (LUMP SUM) PAY ITEM.

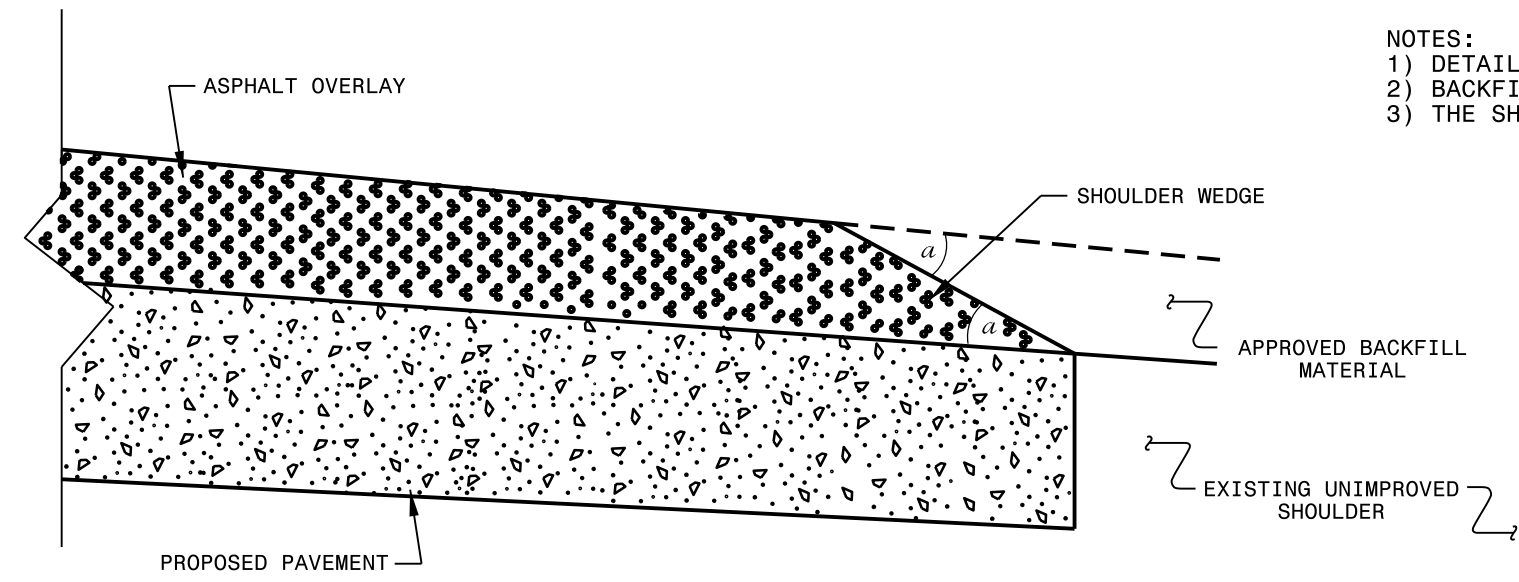
LEGEND	
T	STATIONARY SIGN
➔	DIRECTION OF TRAFFIC FLOW



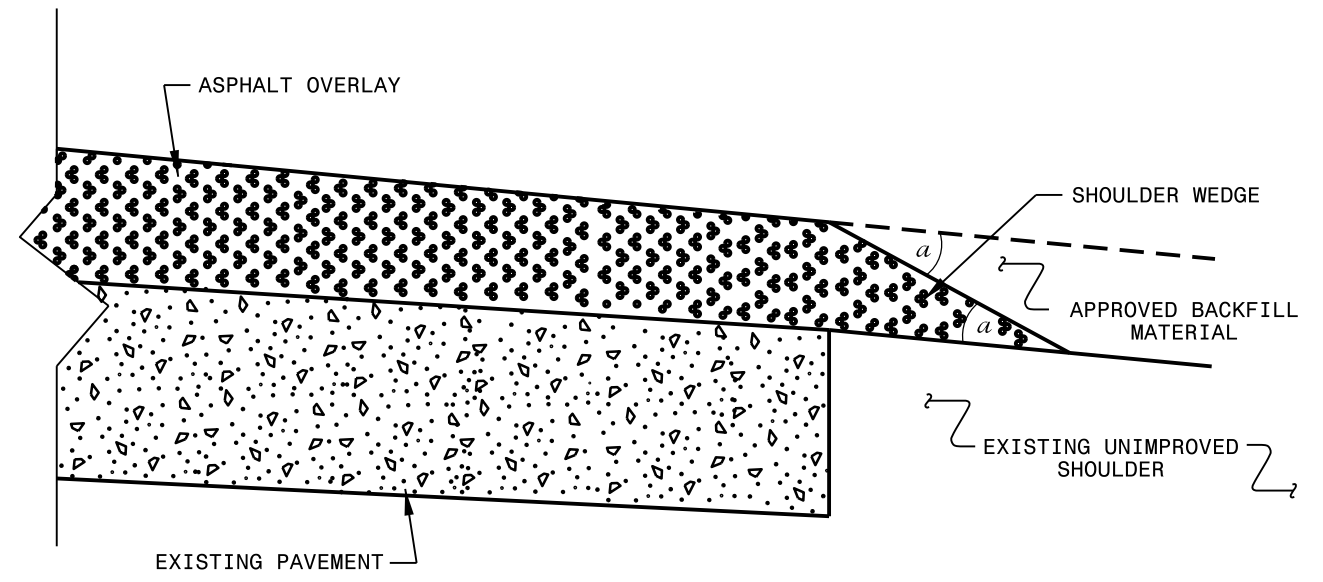
**RESURFACING ADVANCE
WARNING SIGNS FOR
URBAN / SUBURBAN
FACILITIES**

\$\$\$\$\$SYSTIME\$\$\$\$\$
\$\$\$\$\$CON\$\$\$\$\$
\$\$\$\$\$DGN\$\$\$\$\$
\$\$\$\$\$SRNAM\$\$\$\$\$

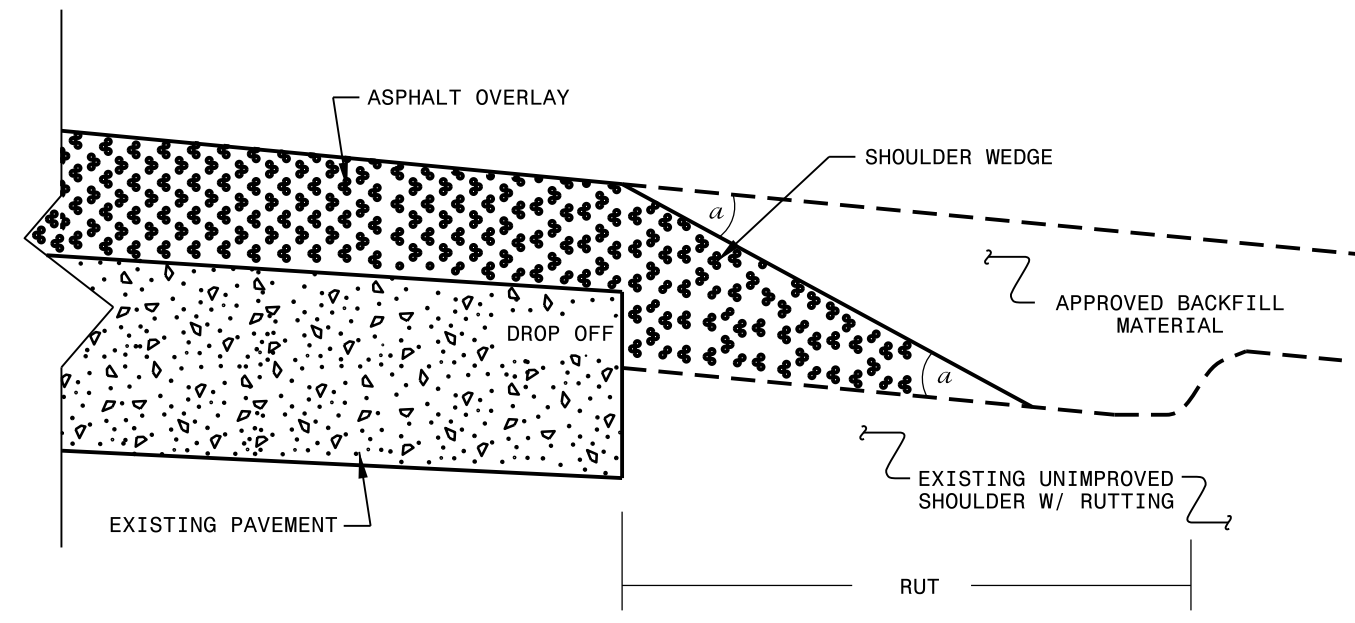
- NOTES:
 1) DETAIL DOES NOT APPLY TO OGAFc AND ULTRA-THIN BONDED WEARING COURSE.
 2) BACKFILL SHOULDER WITH APPROVED MATERIAL.
 3) THE SHOULDER WEDGE DEVICE MAY BE DISENGAGED AT PAVED DRIVEWAYS AND SIDE STREETS.



SHOULDER WEDGE DETAIL
 (Resurfacing Projects w/ Widening or
 with Existing Paved Shoulder having no dropoffs)



SHOULDER WEDGE DETAIL
 (Resurfacing Projects w/ NO Widening)



SHOULDER WEDGE DETAIL
 (Resurfacing Adjacent to
 Rutted Shoulder)

- SHOULDER WEDGE ANGLE = 30°

CONTRACT STANDARDS AND DEVELOPMENT UNIT			
Office 919-707-6950		FAX 919-250-4119	
SHOULDER WEDGE DETAILS			
ORIGINAL BY: T.SPELL	DATE: 7-19-11		
MODIFIED BY:	DATE: 10/16/12		
CHECKED BY:	DATE:		
FILE SPEC.: susr/details/stand/shoulderwedgedetail.dgn			

SYSTEMS DESIGN
 USER NAME